



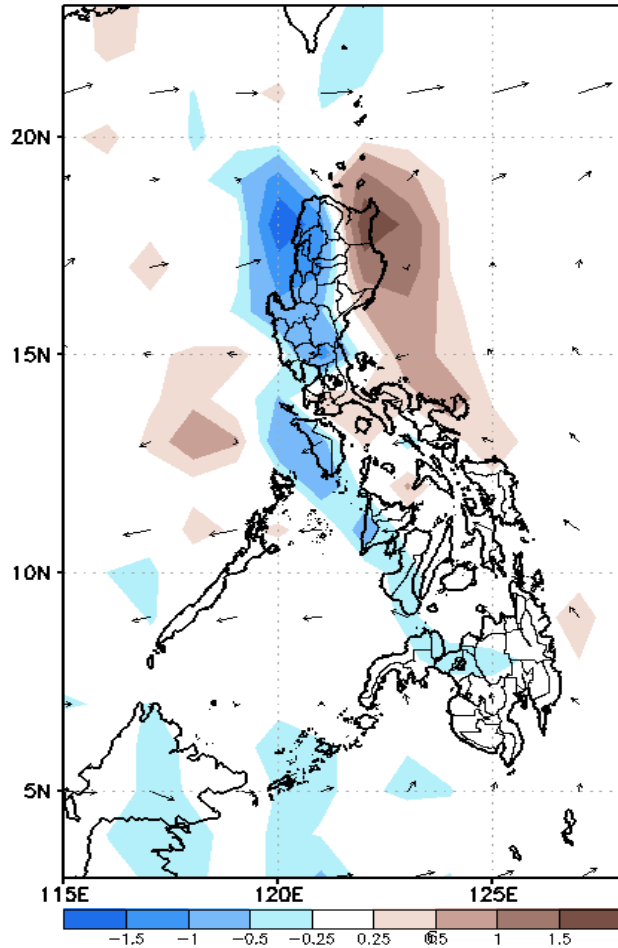
# Week 1 & Week 2 Forecast for the Philippines using GEFS Model



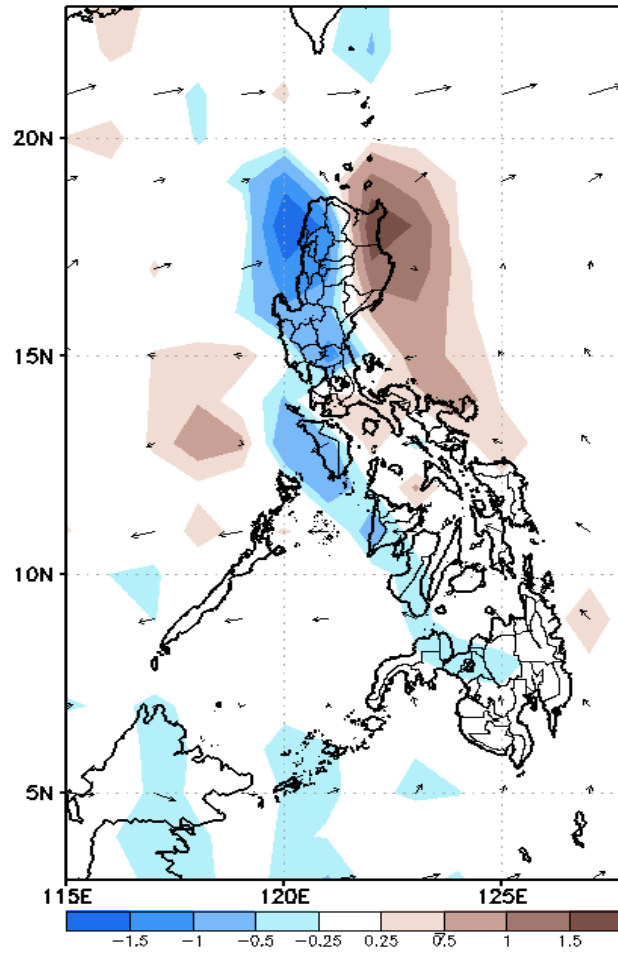
# GEFS Week-1 Forecasts: Divergence & Wind Anomaly

## Week 1: Nov 26-Dec 02, 2020

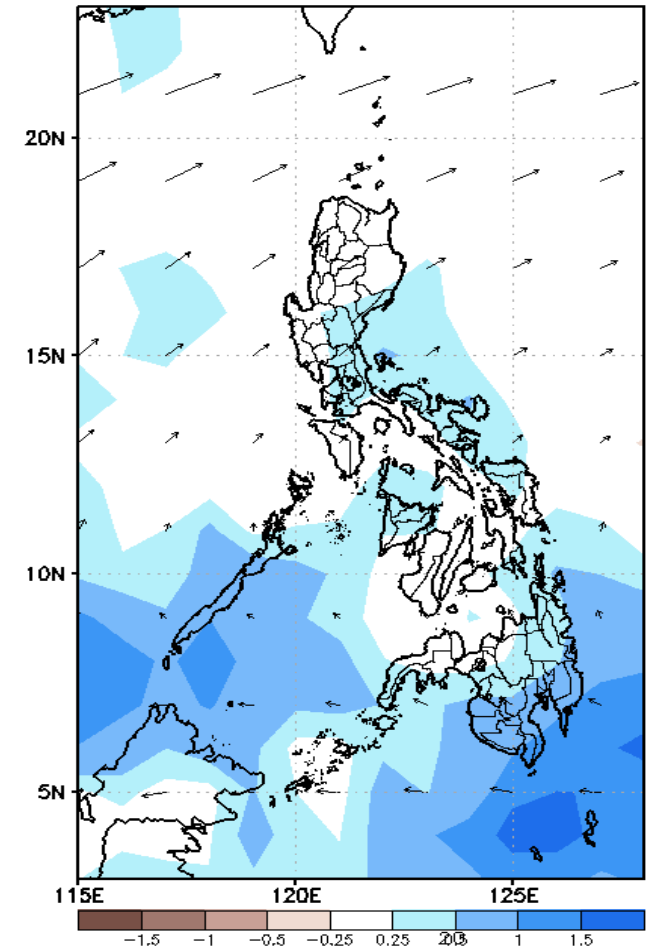
GEFS Week-1 850-hPa Divergence and Wind Anom  
Valid: 20201126 - 20201202



GEFS Week-1 700-hPa Divergence and Wind Anom  
Valid: 20201126 - 20201202



GEFS Week-1 200-hPa Divergence and Wind Anomaly  
Valid: 20201126 - 20201202

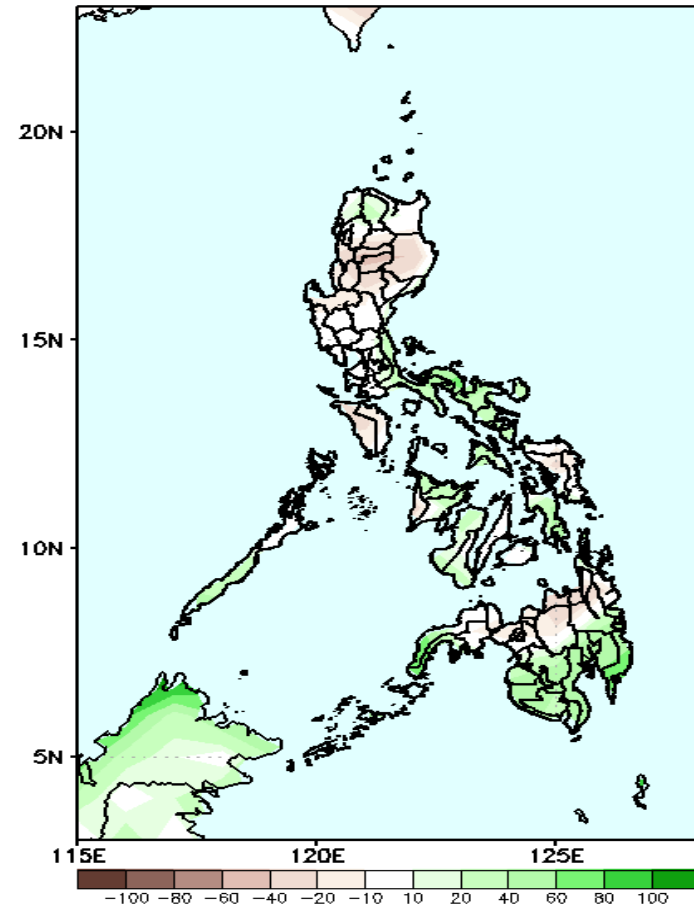


Upper and low level Divergence suggest likelihood of precipitation in most parts of Luzon, Western Visayas and most parts of Mindanao. Northeast monsoon affecting Luzon while easterlies affecting Visayas and Mindanao during the forecast period.

# Precipitation Anomaly and Exceedance Probability > 25/50 mm

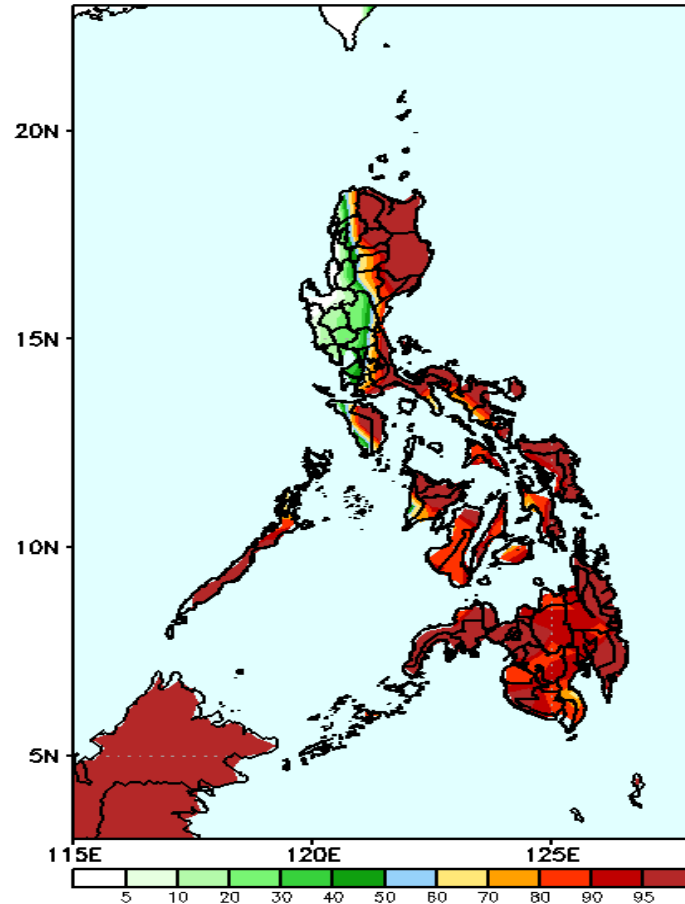
## Week 1: Nov 26-Dec 02, 2020

GEFS Week-1 Precip Anomaly  
Valid: 20201126 - 20201202



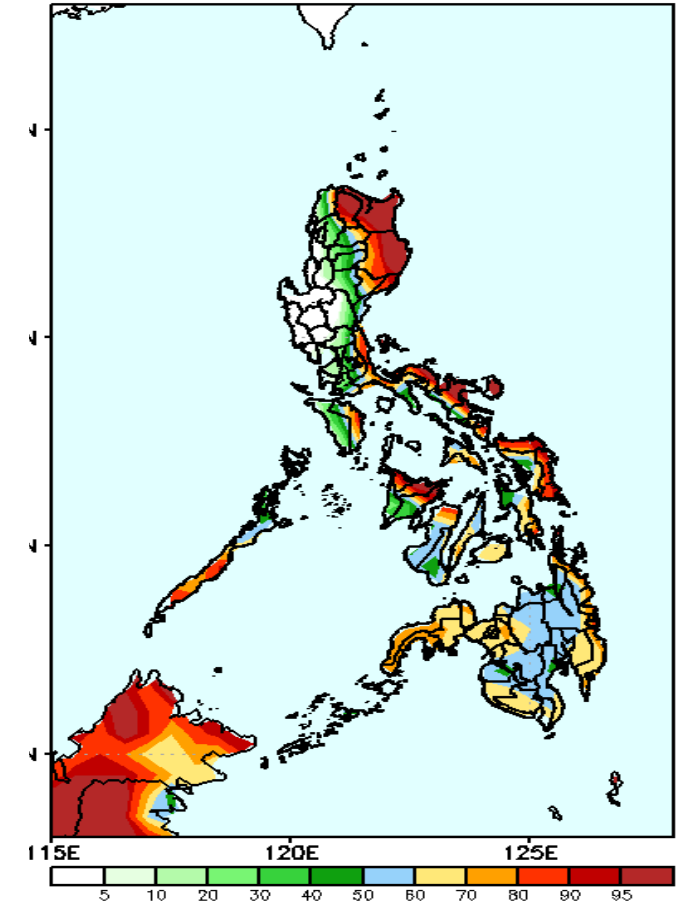
Rainfall deficit of 20-40mm in most parts Northern and Central Luzon, NCR, Cavite, Batangas, Mindoro provinces Samar island, Bohol, CARAGA, Northern Mindanao and parts of Zamboanga peninsula is expected while increase of rainfall of 20-40 mm for the remaining parts of the country

GEFS Week-1 Exceedance Prob. > 25mm  
Valid: 20201126 - 20201202



High probability of rainfall to exceed 25mm in most parts of the country except Ilocos region, most parts of Central Luzon(except Aurora), Batangas, Cavite and NCR during the forecast period.

IFS Week-1 Exceedance Prob. > 50mm  
Valid: 20201126 - 20201202



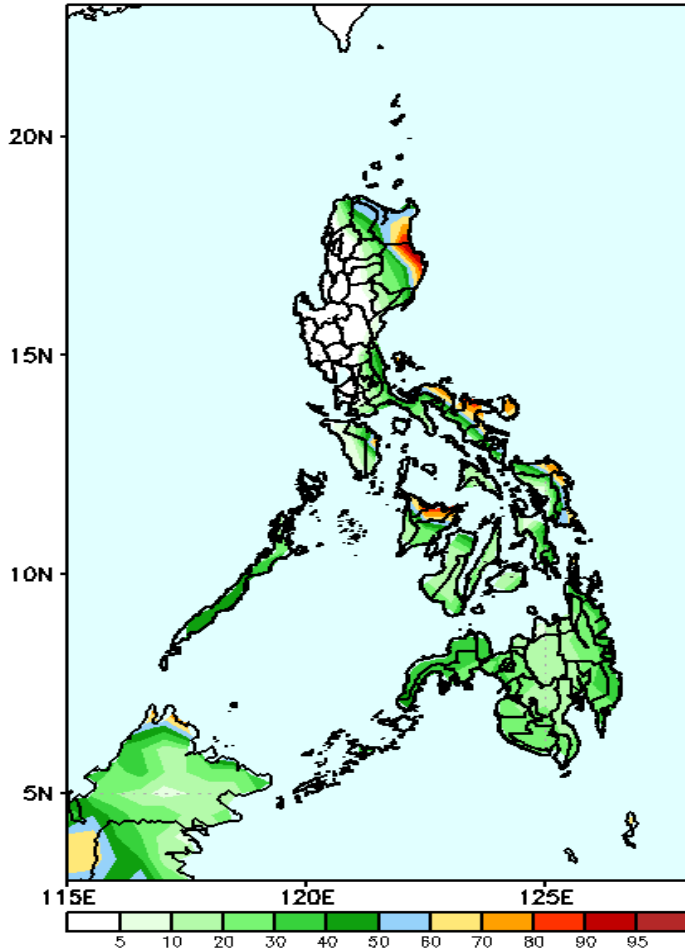
High probability of rainfall to exceed 50mm in Cagayan Valley region, Quezon, Southern Luzon, Oriental Mindoro, Palawan and most parts of Visayas and Mindanao during the forecast period.



# Exceedance Probability > 100/150/200 mm

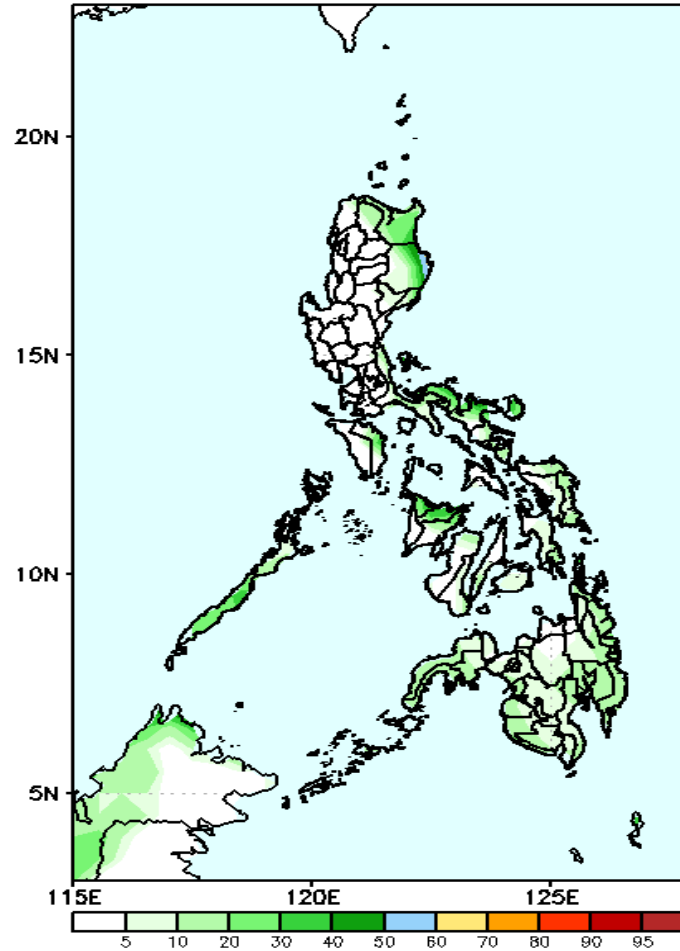
## Week 1: Nov --Dec 02, 2020

GEFS Week-1 Exceedance Prob. > 100mm  
Valid: 20201126 - 20201202



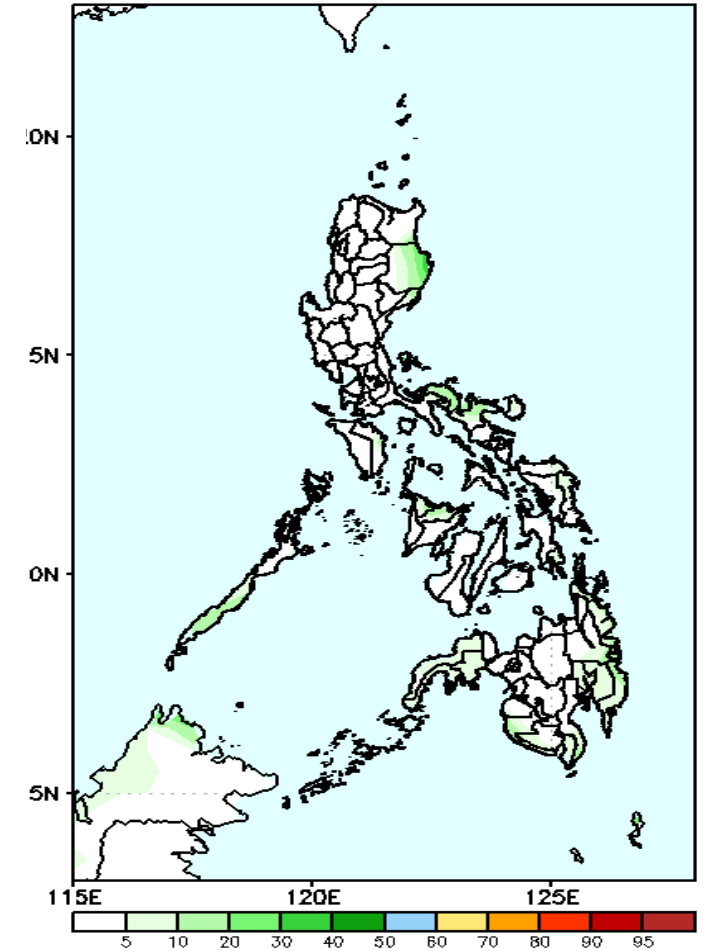
Less probability of rainfall to exceed 100mm in most parts of the country except eastern parts of Cagayan and Isabela, Capiz and Catanduanes were 100mm of rainfall will be likely during the forecast period.

GEFS Week-1 Exceedance Prob. > 150mm  
Valid: 20201126 - 20201202



Less probability of rainfall to exceed 150mm in most parts of the country during the forecast period.

GEFS Week-1 Exceedance Prob. > 200mm  
Valid: 20201126 - 20201202



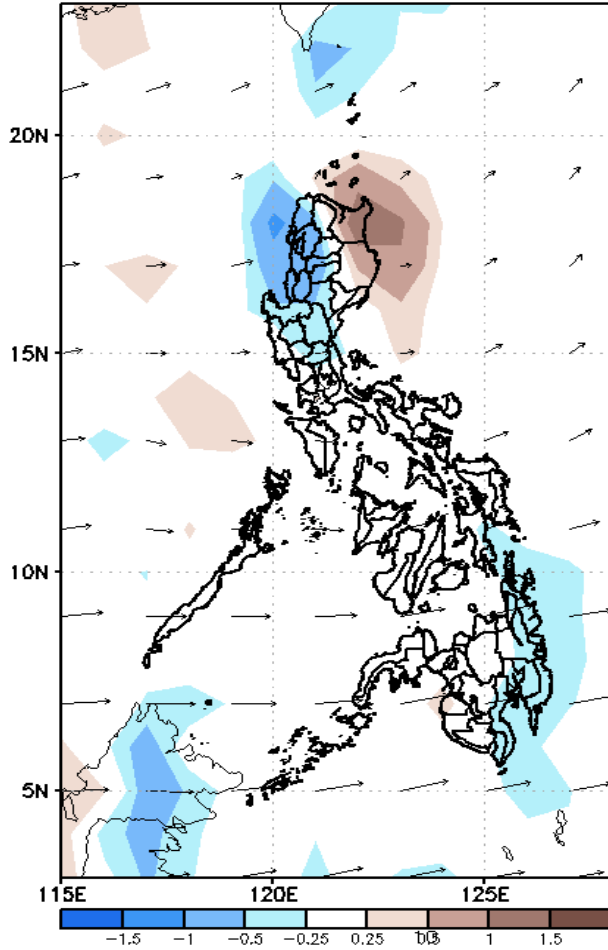
Less probability of rainfall to exceed 200mm in most parts of the country during the forecast period.



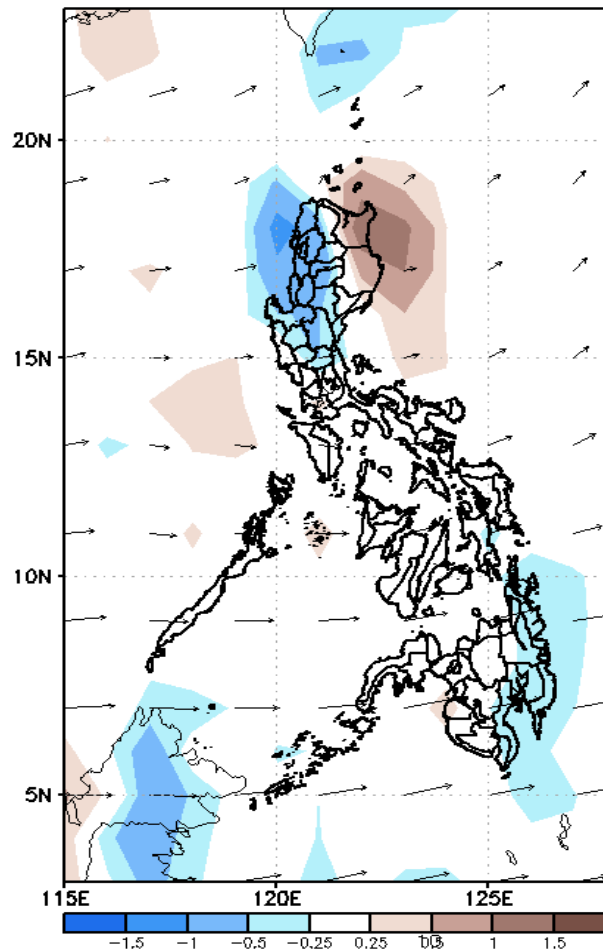
# GEFS Week-2 Forecasts: Divergence & Wind Anomaly

## Week 2: December 03-09, 2020

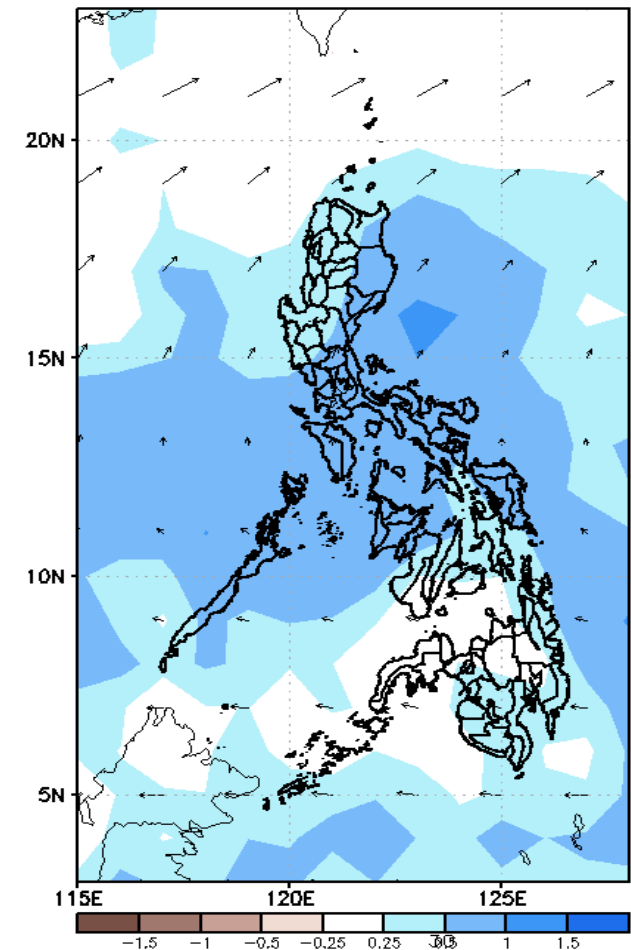
GEFS Week-2 850-hPa Divergence and Wind Anomaly  
Valid: 20201203 - 20201209



GEFS Week-2 700-hPa Divergence and Wind Anomaly  
Valid: 20201203 - 20201209



GEFS week-2 200-hPa Divergence and Wind Anomaly  
Valid: 20201203 - 20201209

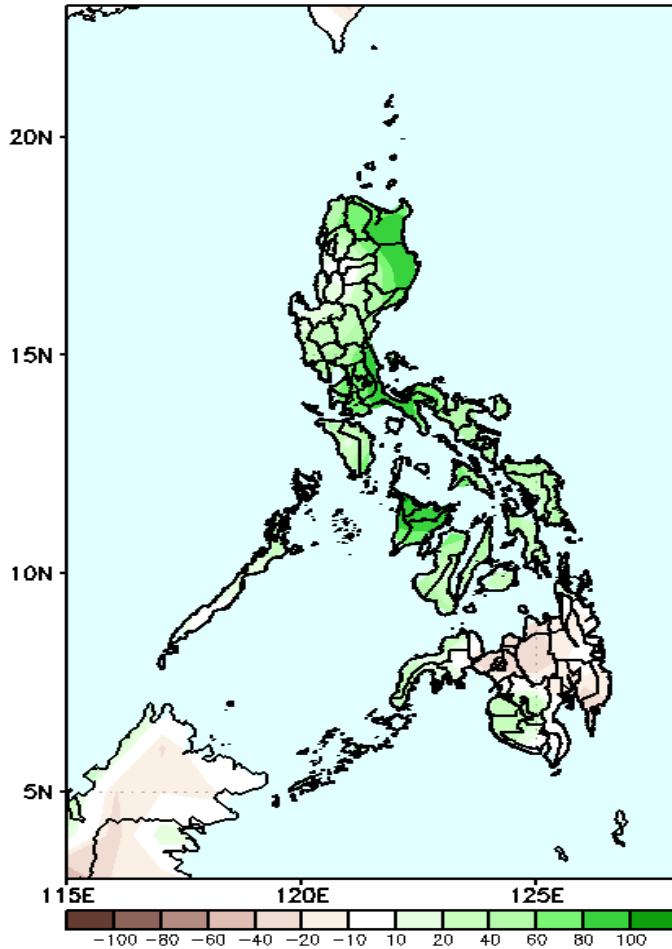


Upper and low level Divergence suggest likelihood of precipitation in most parts of the country. Northeast monsoon affecting Luzon and eastern Visayas, while easterlies affecting Mindanao during the forecast period.

# Precipitation Anomaly and Exceedance Probability > 25/50 mm

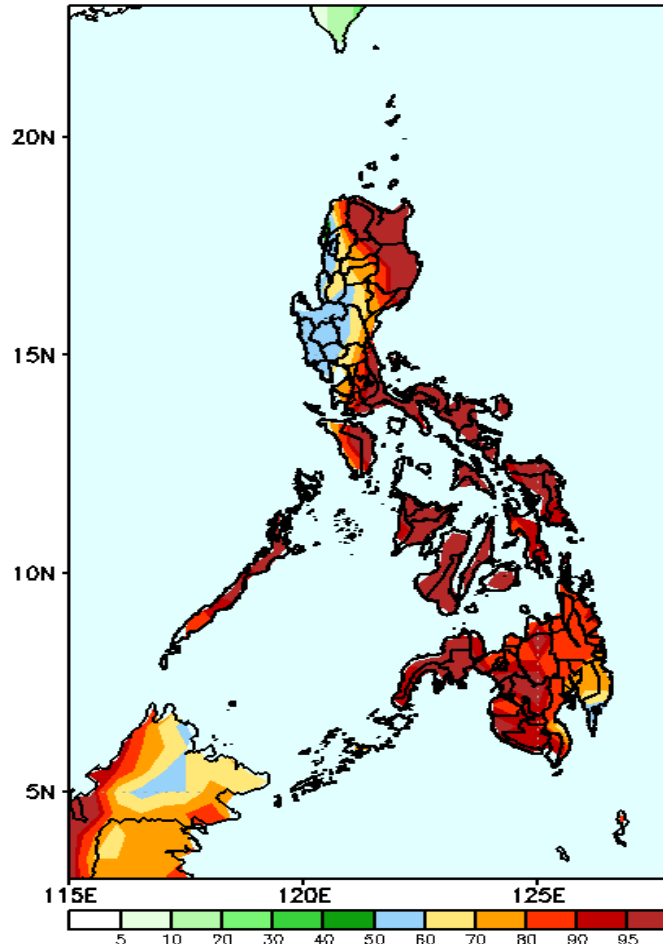
## Week 2: December 03-09, 2020

GEFS Week-2 Precip Anomaly  
Valid: 20201203 - 20201209



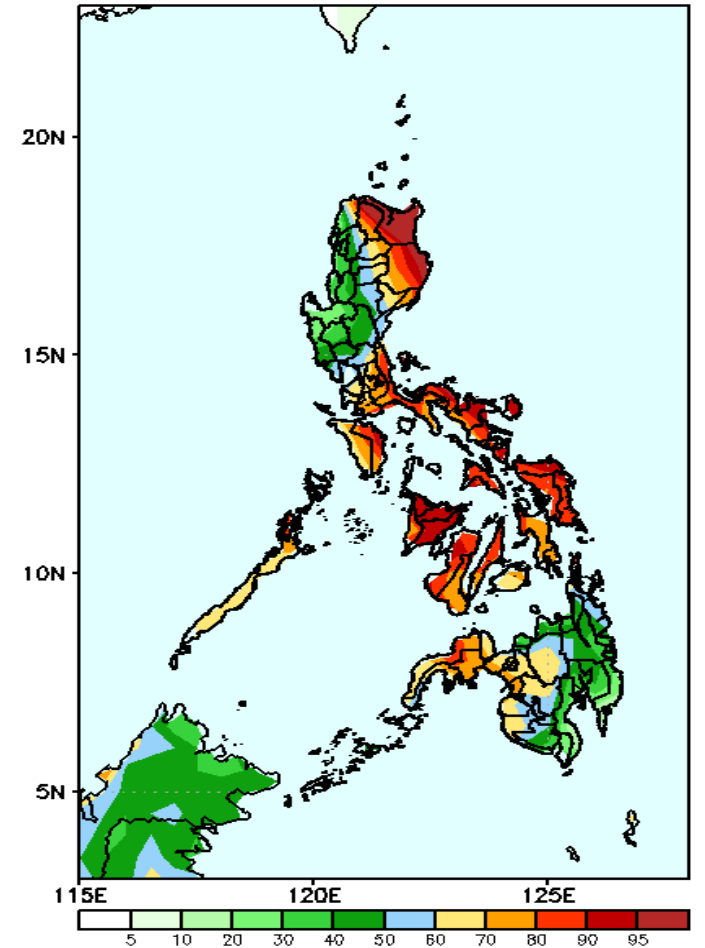
Increase of rainfall of up to 90mm in most parts of Luzon, Visayas, SOCSARGEN & Zamboanga peninsula while decrease in rainfall up to 40 mm for the remaining parts of Mindanao is expected during the forecast period.

GEFS Week-2 Exceedance Prob. > 25mm  
Valid: 20201203 - 20201209



High probability of rainfall to exceed 25mm in most parts of the country except Ilocos region, most parts of Central Luzon(except Aurora), Batangas, Cavite and NCR during the forecast period.

GEFS Week-2 Exceedance Prob. > 50mm  
Valid: 20201203 - 20201209



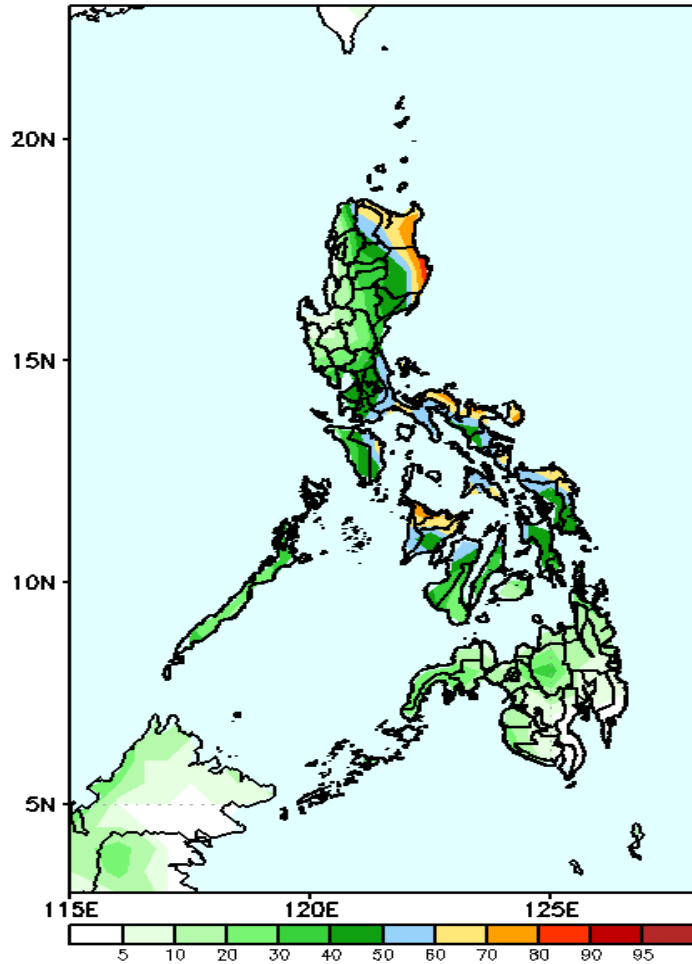
High probability of rainfall to exceed 50mm in Cagayan Valley region, CALABARZON, MIMAROPA, Southern Luzon, Oriental Mindoro, Palawan, mosts parts of Visayas and Mindanao during the forecast period.



# Exceedance Probability > 100/150/200 mm

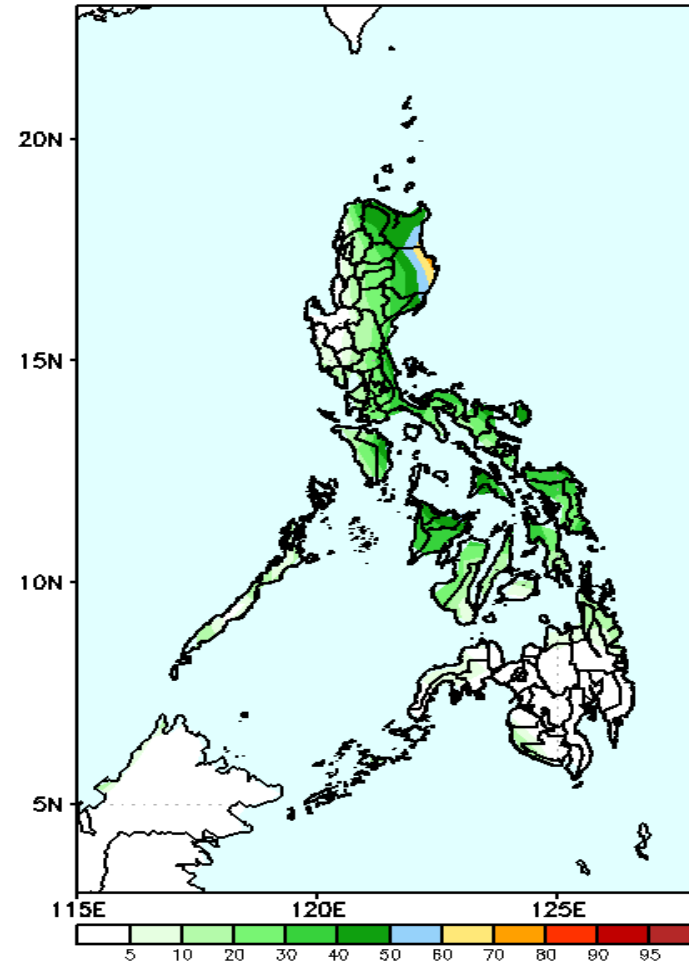
## Week 2: December 03-09, 2020

GEFS Week-2 Exceedance Prob. > 100mm  
Valid: 20201203 - 20201209



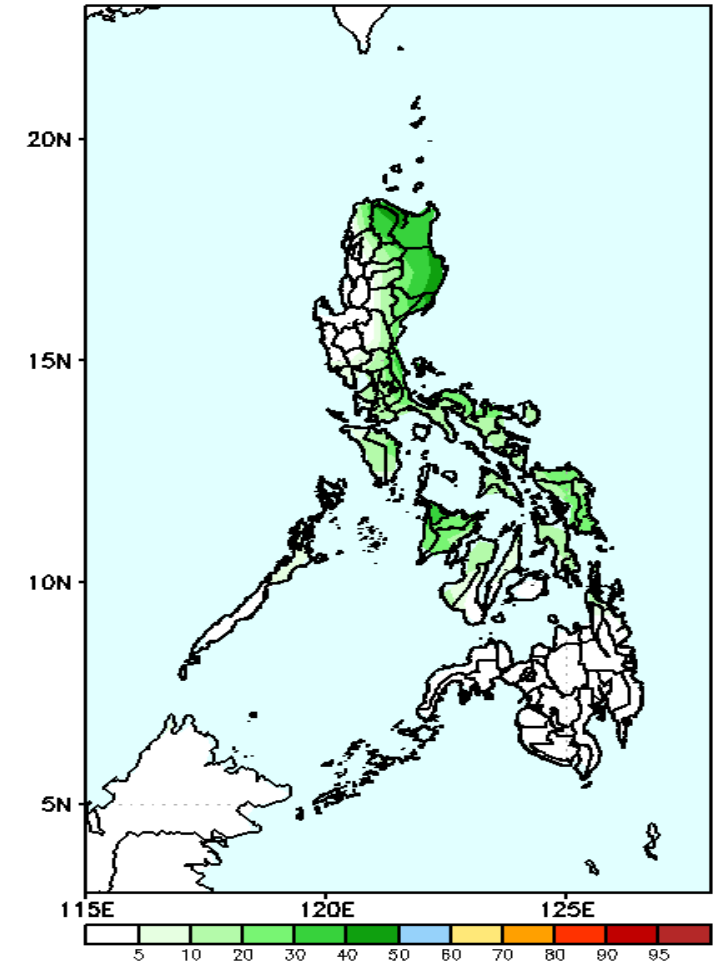
Less probability of rainfall to exceed 100mm in most parts of the country except eastern parts of Cagayan and Isabela and Catanduanes where 100mm of rainfall will be likely during the forecast period.

GEFS Week-2 Exceedance Prob. > 150mm  
Valid: 20201203 - 20201209



Less probability of rainfall to exceed 150mm in most parts of the country during the forecast period.

GEFS Week-2 Exceedance Prob. > 200mm  
Valid: 20201203 - 20201209

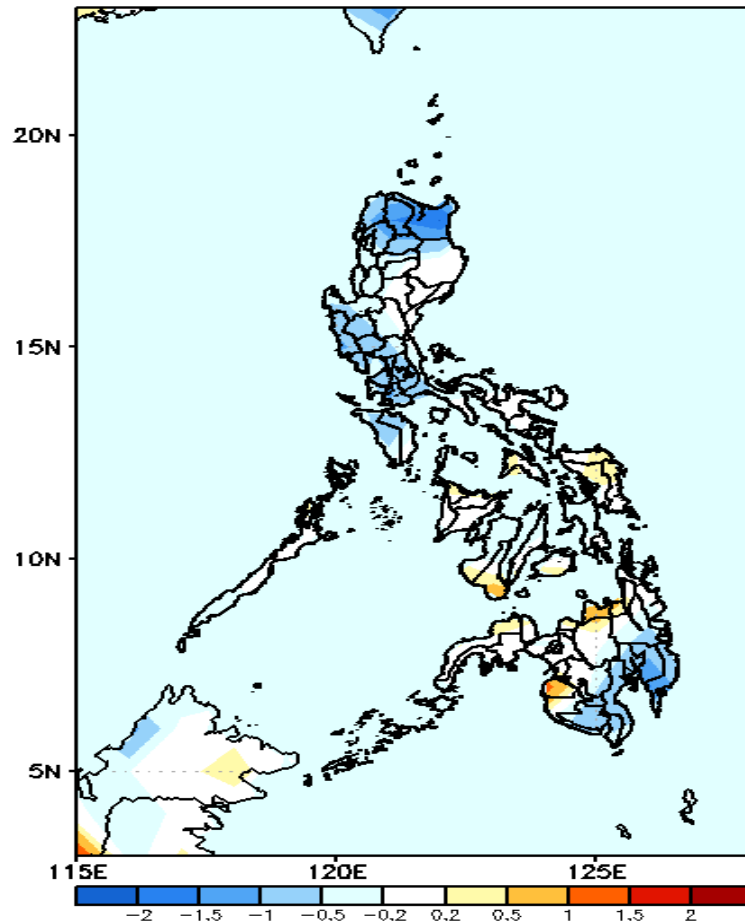


Less probability of rainfall to exceed 200mm in most parts of the country during the forecast period.



# GEFS Week-1 & 2 Forecasts: T2m Anomaly

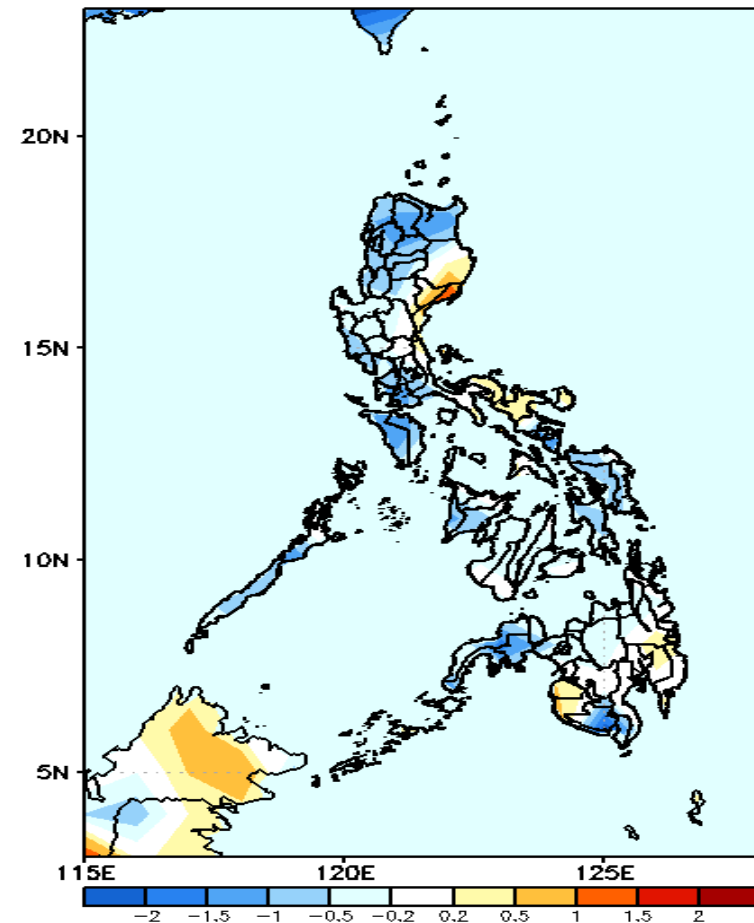
GEFS Week-1 T2m Anomaly  
Valid: 20201126 - 20201202



## 2m Temperature Week 1: Nov 26-Dec 02, 2020

Slightly cooler to cooler than average surface air temperature is expected in most parts of Luzon, central Visayas, Davao Region and southern Mindanao while the rest of the country will likely have average to slightly warmer temperature.

GEFS Week-2 T2m Anomaly  
Valid: 20201203 - 20201209



## 2m Temperature Week 2: December 03-09, 2020

Slightly cooler to cooler than average surface air temperature is expected in Western Luzon, Central Luzon(except Aurora), MIMAROPA, most of Visayas and Mindanao(except Davao del Norte, Maguindanao and Sultan Kudarat) while the rest of the country will likely have